

CERTIFICATE OF LOCATION OF GOVERNMENT CORNER

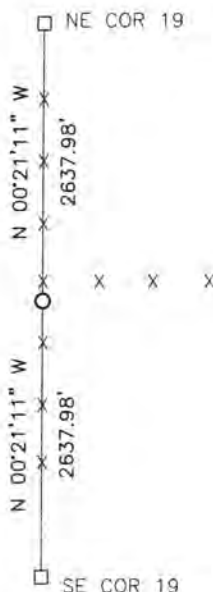
EAST QUARTER Corner of Section 19, Township 108, Range 41, 5TH P.M.

STATE OF MINNESOTA, County of MURRAY

At the corner location shown on the sketch:

- On _____ found a _____
- left monument as found, lowered monument, removed monument (explain)
- On 10/3/16 placed a 5/8" iron with seal #43844

SKETCH OF REFERENCE TIES



Minnesota State Plane Coordinate
 System Murray County Datum
 NAD83 (1996)
 N: 208406.646
 E: 490071.640

Statement of evidence relative to this corner location is on back of page.

I hereby certify that this document and the data contained herein was prepared by me or under my direct supervision.

Paul A. Smith
SIGNATURE

1/30/17
DATE

Registration No. 43844

- Land Surveyor, Professional Engineer
- County Surveyor, County Engineer

OFFICE OF THE COUNTY RECORDER

County of MURRAY

I hereby certify that this document was filed in the Co. Recorders office at 9:00 A.M on the 17TH day of FEBRUARY A.D. 2017

County Recorder Evelyn C. Larson

By _____, Deputy

DOCUMENT NO. _____

Statement of Evidence

In September, 1861, L.G.M. Fletcher did the original subdivision of the township.

On July 17, 1909, J.W. Woolstencroft recorded equal distances between section corners.

On June 17, 1915, J.R. Johnston, County Surveyor, recorded equal distance between section corners.

On October 3, 2016, Bueltel-Moseng Land Surveying set a 5/8" iron with seal #43844 midway and on line between the section corners. It is in line with old fence to the north and south and 2'± south of old fence to the east.